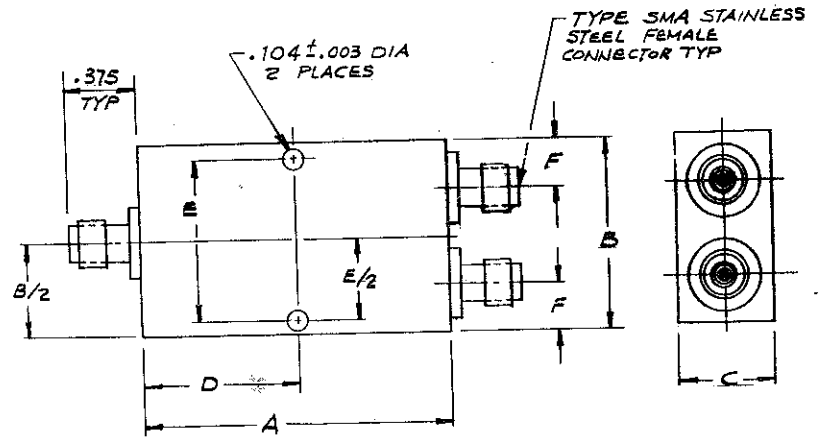
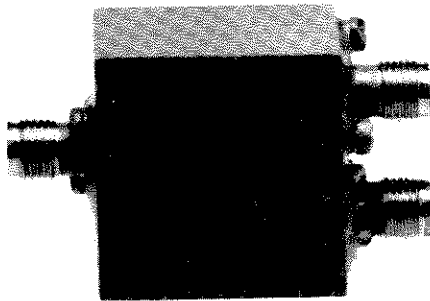


# POWER DIVIDERS ISOLATED



**DESCRIPTION:** Microlab/FXR power dividers are Wilkinson type devices designed to divide or combine RF signals utilizing rugged stripline construction. The devices exhibit excellent amplitude/phase balance. High isolation between output ports is achieved by utilizing precision integral resistive elements.

**SPECIAL DESIGN:** The series can be supplied to meet special customer supplied electrical and mechanical requirements.

OUTLINE	A	B	C	D	E	F
1	1.00	1.00	0.50	0.50	0.64	0.25
2	1.50	1.50	0.50	0.75	1.31	0.25
3	2.00	1.50	0.50	1.00	1.31	0.25
4	1.50	2.50	0.50	0.53	2.31	0.75
5	1.62	1.00	0.38	0.75	0.85	0.25

### BASIC UNIT — FEMALE CONNECTORS

FREQUENCY RANGE (GHz)	MAX VSWR	ISOLATION (dB)	MAX LOSS (dB)	AVE. POWER WATTS (1)	AMPLITUDE BAL. (dB max)	PHASE BAL. (DEGREES) (max)	MICROLAB/FXR PART NO.	OUTLINE
0.5-1	1.20	22	0.20	20	0.2	2.0	DF-1FF	4
1-2	1.25	22	0.25	20	0.2	3.0	DF-2FF	2
2-4	1.30	20	0.25	10	0.2	4.0	DF-3FF	2
4-8	1.30	20	0.30	10	0.2	4.0	DF-4FF	1
2-8	1.35	20	0.30	10	0.2	4.0	DF-5FF	3
8-12.4	1.30	20	0.40	10	0.2	4.0	DF-6FF	1
8-18	1.30	20	0.50	10	0.2	5.0	DF-7FF	1
2-18	1.35	18	1.00	10	0.2	5.0	DF-8FF	5

(1) Load VSWR 2:1 MAX



**MICROLAB/FXR**

PHONE (201) 992-7700  
LIVINGSTON, N. J. 07039