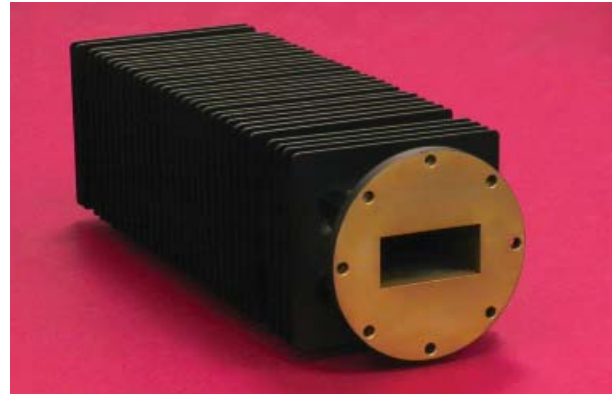


- ◆ Extremely Rugged High Power Loads
- ◆ High Temperature Refractory Load Elements
- ◆ Optimized Transverse Cooling Fins
- ◆ Available with most Common Flanges
- ◆ Choice of Mounting Types



Microlab WG series dummy loads are optimized versions of the DA loads per MIL-D-3954A or their commercial equivalents. Superior performance is achieved by slight changes in physical dimensions, more efficient fin cooling and increased waveguide pressure. Also, additional mounting in the form of tapped holes with stainless steel inserts are provided at the rear of the loads.

The loads employ transverse cooling fins and high temperature refractory load elements designed to meet the requirements of MIL-D-3954A. These load elements are in direct contact with the waveguide walls for optimum heat transfer. They can withstand extremely high temperature, temperature gradients and thermal shocks.

In the specifications table, the independent average power rating assumes CW operation, and the peak power rating assumes negligible average power. The combined average and peak power ratings should be employed together.

Details on mounting types I and II and designs to meet special requirements for bandwidth, size, flanges, etc., are available on request. (08/12)

Dissipative

Material:	Refractory
Test Pressure:	50 psig. max.
Housing Finish:	Black Paint Per TT-E-489
Flange Type:	
<2.6 GHz:	Contact
>2.6 GHz:	Flange Cover
Material:	Aluminum
Flange Finish:	Iridite Per MIL-C-5541

Model No.	Frequency Range GHz	Waveguide Size		Power Ratings					Nominal Dimensions Inches (mm)			Weight nom. lbs (kg)
		RG	WR	Independent [†] W avg.	kW pk. @45 psig	Combined W avg.	kW pk. @30 psig	VSWR max.	L	W	H	
WG-0005	1.12 - 1.70	103	650	9000	100,000	6000	20,000	1.15:1	37.6 (955)	8.9 (226)	11.4 (290)	91 (41.3)
WG-0015	1.70 - 2.60	105	430	6500	45,000	5000	10,000	1.15:1	24.4 (620)	6.7 (170)	8.8 (224)	30 (13.6)
WG-0025	2.60 - 3.95	75	284	5000	19,000	400	4,000	1.10:1	16.6 (422)	5.4 (137)	6.4 (163)	12 (5.5)
WG-0035	3.95 - 5.85	95	187	2500	7,750	1800	1,800	1.10:1	12.2 (310)	3.6 (91)	4.1 (104)	5.5 (2.5)
WG-0045	5.85 - 8.20	106	137	1500	4,250	1000	1,000	1.10:1	9.5 (241)	3.1 (79)	3.9 (99)	3.5 (1.6)
WG-0050	7.05 - 10.0	68	112	750	2,750	600	750	1.10:1	7.9 (201)	2.5 (64)	3.1 (79)	1.7 (0.77)
WG-0055	8.20 - 8.80 8.80 - 12.4	67	90	650	1,750	500	350	1.15:1 1.10:1	6.7 (170)	2.8 (71)	2.8 (71)	1.4 (0.64)
WG-0065	12.4 - 18.0	349	62	400	1,000	250	250	1.10:1	4.7 (119)	2.4 (61)	2.4 (61)	0.75 (0.34)
WG-0075	18.0 - 26.5	121	42	300	350	150	100	1.15:1	4.5 (114)	2.2 (56)	2.2 (56)	0.37 (0.17)
WG-0085	26.5 - 40.0	‡96	28	300	175	100	75	1.20:1	4.5 (114)	2.0 (51)	2.2 (56)	0.37 (0.17)

‡Aluminum Equivalent

† see text