

- ◆ Octave bands to 4 GHz
- ◆ See wireless versions for special low PIM and multi band coverage
- ◆ 100W average Power Rating
- ◆ High Isolation, Low VSWR
- ◆ N Connectors

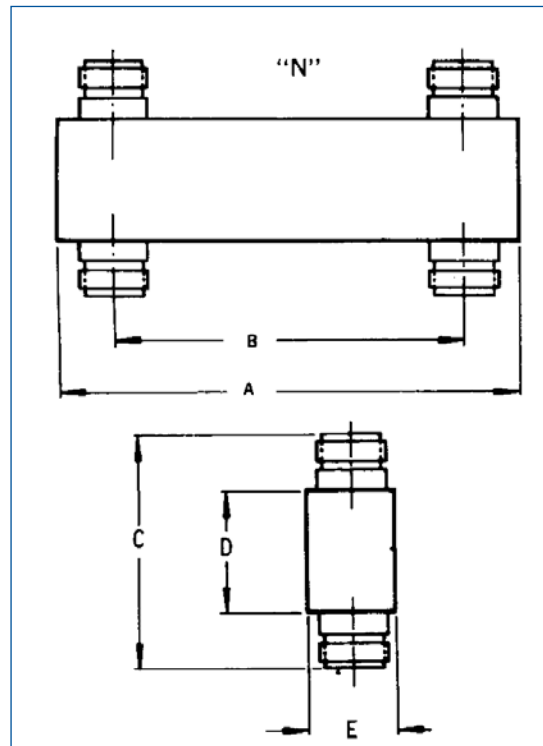


The Microlab CA series of 3 dB Hybrids are reciprocal 4 port networks also known as Hybrid Combiners, 90° Power Dividers or Quadrature Couplers. Each is designed using stripline construction to achieve high isolation and low VSWR.

Common applications includes interfacing drivers with parallel power amplifiers where the reflections due to common load mismatches are combined at the isolated port and cancel at the input providing excellent system match. Wireless versions are designed for use in hybrid combiner applications in the 380 to 2700 MHz bands to combine two signal sources to a single antenna. This application requires a hybrid with very low passive intermodulation (PIM).

Custom versions are available with special bandwidths or alternate connectors on request. (8/08)

Nominal Coupling:	3 dB
Frequency Sensitivity:	0.5 dB
Impedance:	50Ω nominal
Power Rating:	100W average, 3 kW peak.
Temperature Range:	-55°C to +125°C
N female Connectors:	Triplate or Silver
Housing:	Passivated aluminum



Model Number	Frequency Range, MHz	Isolation min.	Insertion Loss, dB	Dimensions inches (mm)					Weight oz. (g)
				A	B	C	D	E	
CA-15N	200 - 400	25 dB	0.1	7.22 (183)	6.14 (156)	2.30 (58)	1.3 (33)	0.9 (23)	14.0 (399)
CA-25N	400 - 800	25 dB	0.1	4.22 (107)	3.14 (80)	2.30 (58)	1.3 (33)	0.9 (23)	9.0 (256)
CA-35N	750 - 1500	25 dB	0.1	2.82 (72)	1.74 (44)	2.30 (58)	1.3 (33)	0.9 (23)	6.7 (191)
CA-45N	1000 - 2000	25 dB	0.1	2.42 (61)	1.34 (34)	2.30 (58)	1.3 (33)	0.9 (23)	6.0 (171)
CA-55N	1500 - 3000	20 dB	0.15	2.02 (51)	0.94 (24)	2.30 (58)	1.3 (33)	0.9 (23)	5.0 (143)
CA-65N	2000 - 4000	20 dB	0.15	1.82 (46)	0.84 (21)	2.00 (51)	1.0 (25)	0.75 (19)	4.0 (114)