

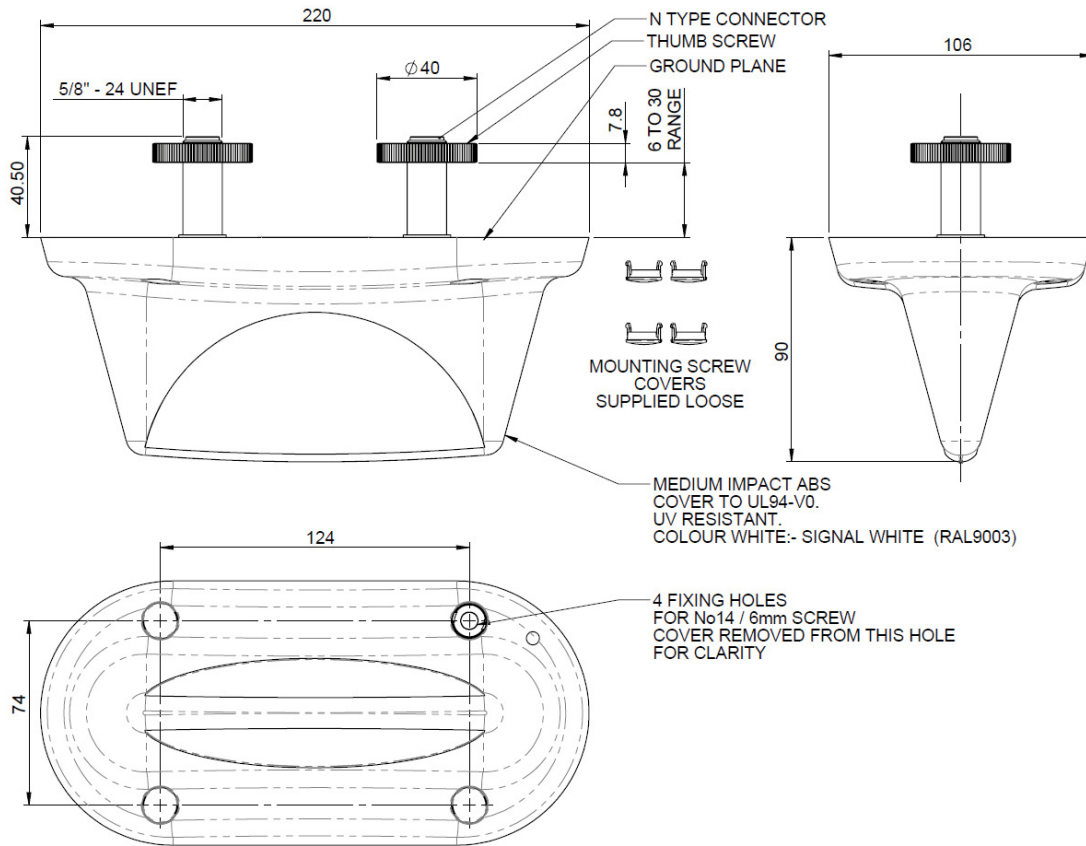
- ◆ MIMO Omni Antenna for all common wireless carrier bands from 698-960MHz and 1710-6000MHz
- ◆ Low Passive IM., PIM
- ◆ Small Size and Light Weight
- ◆ Ceiling Mount
- ◆ High Gain and Stable Performance
- ◆ Up to 50 Watts Average Power
- ◆ SAR tested to EN50385:2002
- ◆ Simple, Cost Effective Design
- ◆ For Indoor Applications

The YA-31NF is an attractive low cost MIMO omnidirectional antenna. These antennas are popular for propagating in-building wireless signals in distributed antenna systems, (DAS). This wideband antenna covers all common wireless and WiFi bands in the range of 698 to 6000 MHz such as 700, 800, 850, 900, 1700, 1800, 1900, 2100, 2400, 2600, 3500, 4900, 5000 and 5750 MHz.

The Antenna only requires two mounting holes for installation via the fitted Low PIM N-type female connectors but offers additional screw fixing holes disguised beneath press-fit caps. The antenna is ground independent and can be fitted onto both thick and thin ceiling tiles. (6/15)



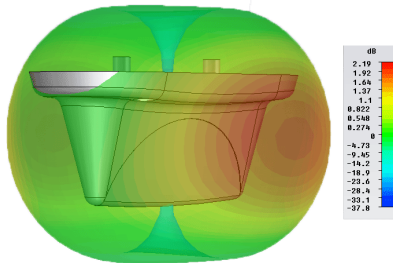
Frequency Bands:	
Band 1:	698-960 MHz
Band 2:	1500-6000 MHz
Nominal Peak Gain:	2 dBi @698-960 MHz 4 dBi @1710-2170 MHz 7 dBi @2200-6000 MHz
VSWR:	<2.5:1 typ. @698-800/3400-3800 MHz <1.5:1 typ. @800-960/1710-2700 MHz <2:1 typ. @4900-6000 MHz
Radiation Pattern:	Omni-directional
Input Power:	50W max
Impedance:	50Ω nominal
Intermod. (PIM):	<-153 dBc max (test with 2 x +43 dBm tones)
Environment:	-30° to +70°C, operational
Radome Material:	White, U.V Stabilised flame retardant ABS
Back Plate:	Aluminum
Antenna Dimensions:	
Height:	3.5 in (90 mm)
Length:	8.7 in (220 mm)
Width:	4.7 in (106 mm)
Mounting Dimensions:	
Diameter:	0.24 in (6 mm)/0.625 in (16 mm)
Depth:	1.6 in (41 mm)
Connectors:	2 x N-type female
Mounting:	4 x 6 mm screw mounting holes and/or N-type socket lock wheel



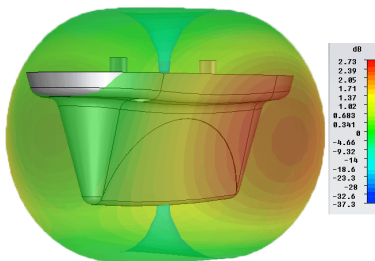
All dimensions in mm unless otherwise stated

### 3D Gain Plots

800 MHz



900 MHz



18/1900 MHz

